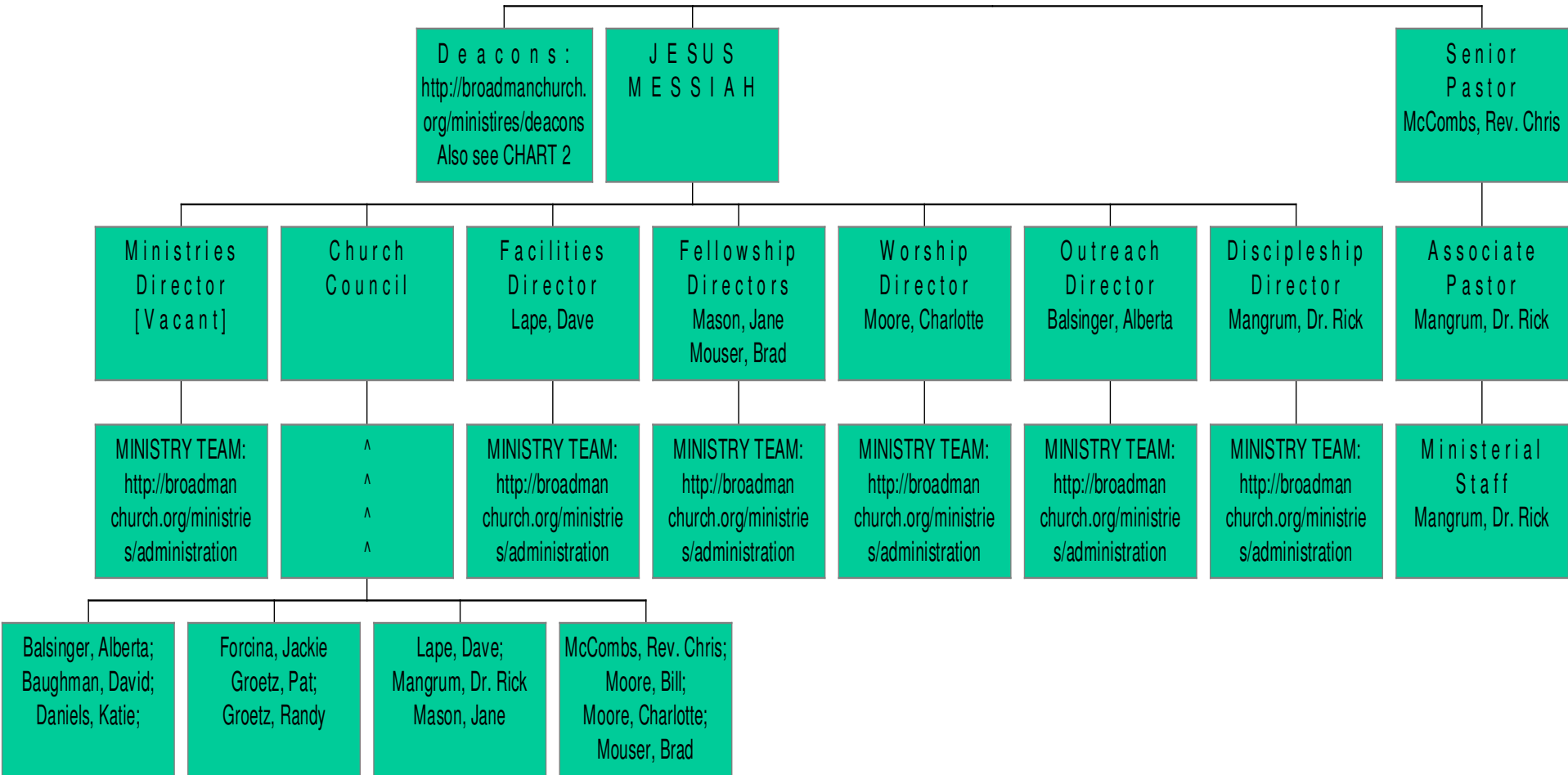


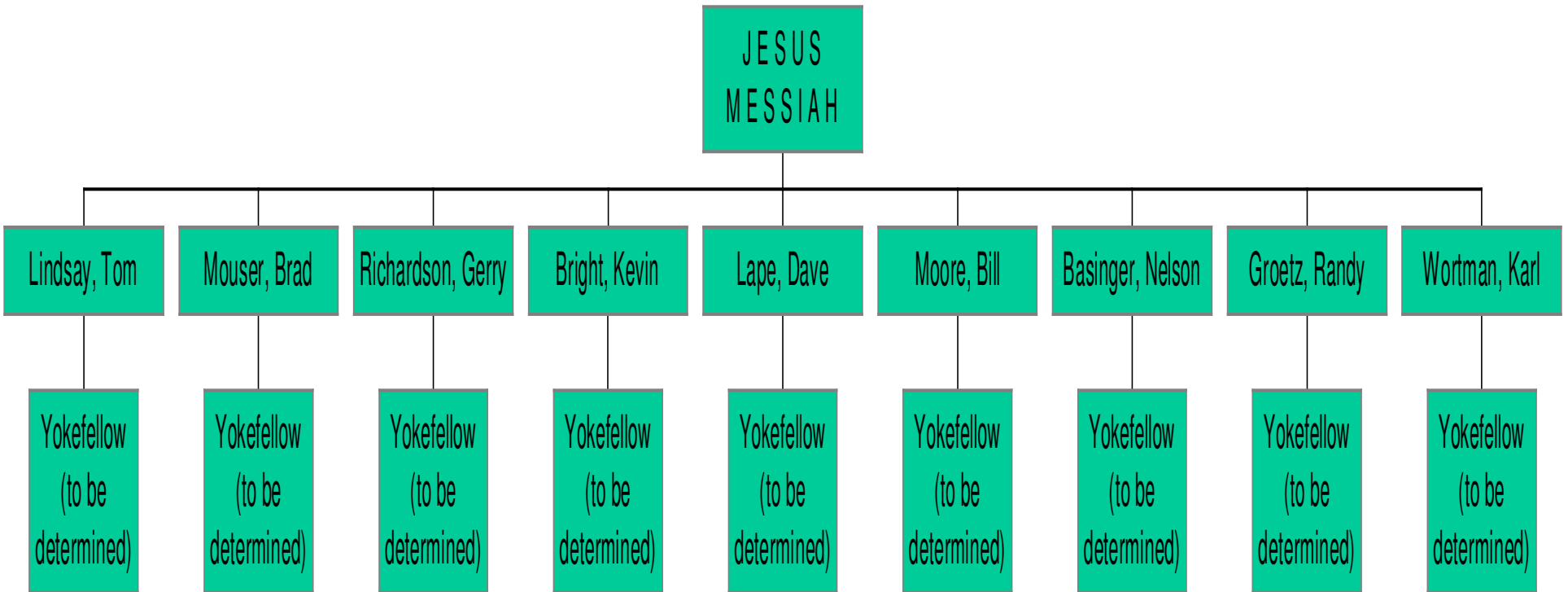
# BROADMAN BAPTIST CHURCH

Cuyahoga Falls, Ohio

January 20, 2010

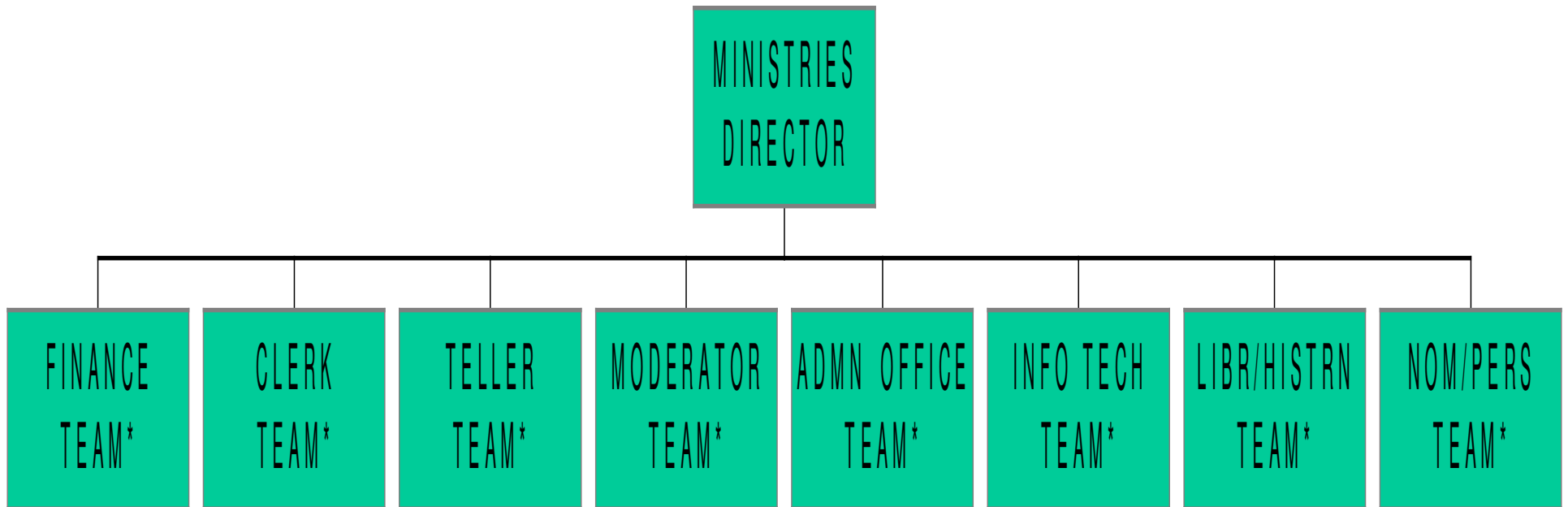


# DEACONS -- See also CHART 1



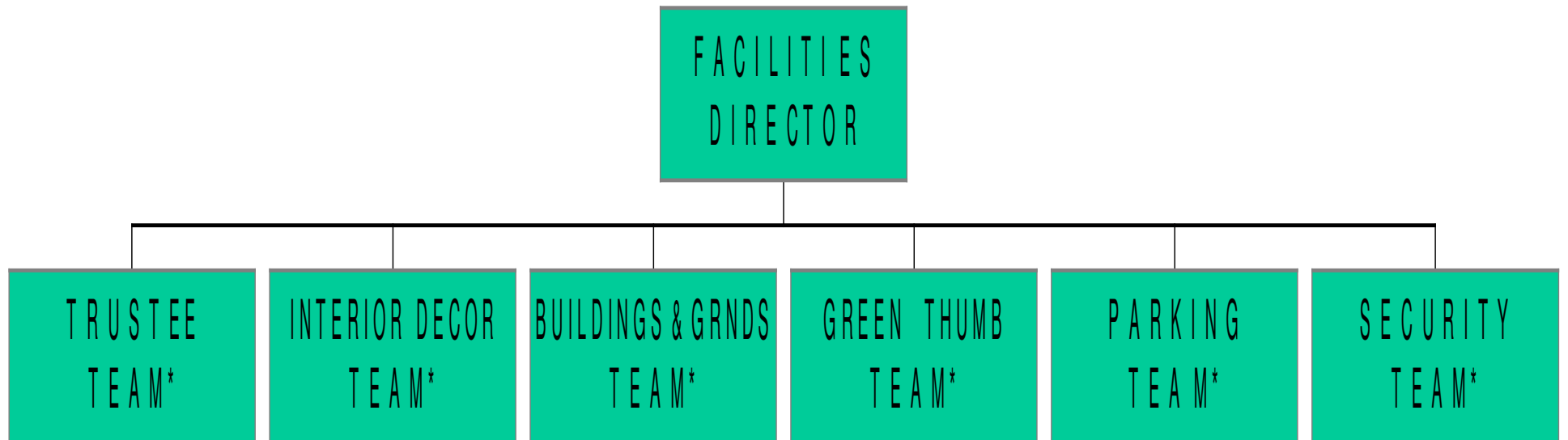
**\* See MINISTRY TEAMS at**  
<http://broadmanchurch.org/ministries/administration>

## ADMINISTRATIVE MINISTRIES



**\* See MINISTRY TEAMS at**  
<http://broadmanchurch.org/ministries/administration>

FACILITIES MINISTRIES



**\* See MINISTRY TEAMS at**  
<http://broadmanchurch.org/ministries/administration>

## FELLOWSHIP MINISTRIES

FELLOWSHIP  
DIRECTOR

```
graph TD; A[FELLOWSHIP DIRECTOR] --- B[FELLOWSHIP TEAM *]; A --- C[HOSTESS TEAM *]; A --- D[FAMILY ACTIVITIES TEAM *]; A --- E[HELPING HANDS TEAM *];
```

FELLOWSHIP  
TEAM \*

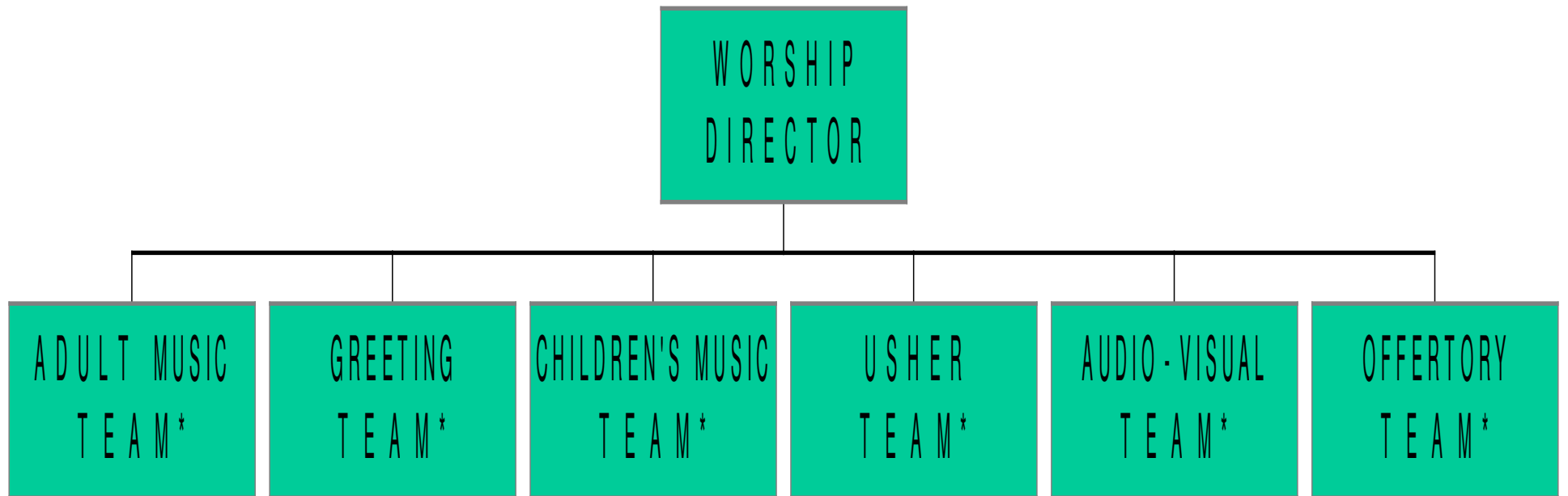
HOSTESS  
TEAM \*

FAMILY ACTIVITIES  
TEAM \*

HELPING HANDS  
TEAM \*

**\* See MINISTRY TEAMS at**  
<http://broadmanchurch.org/ministries/administration>

## WORSHIP MINISTRIES



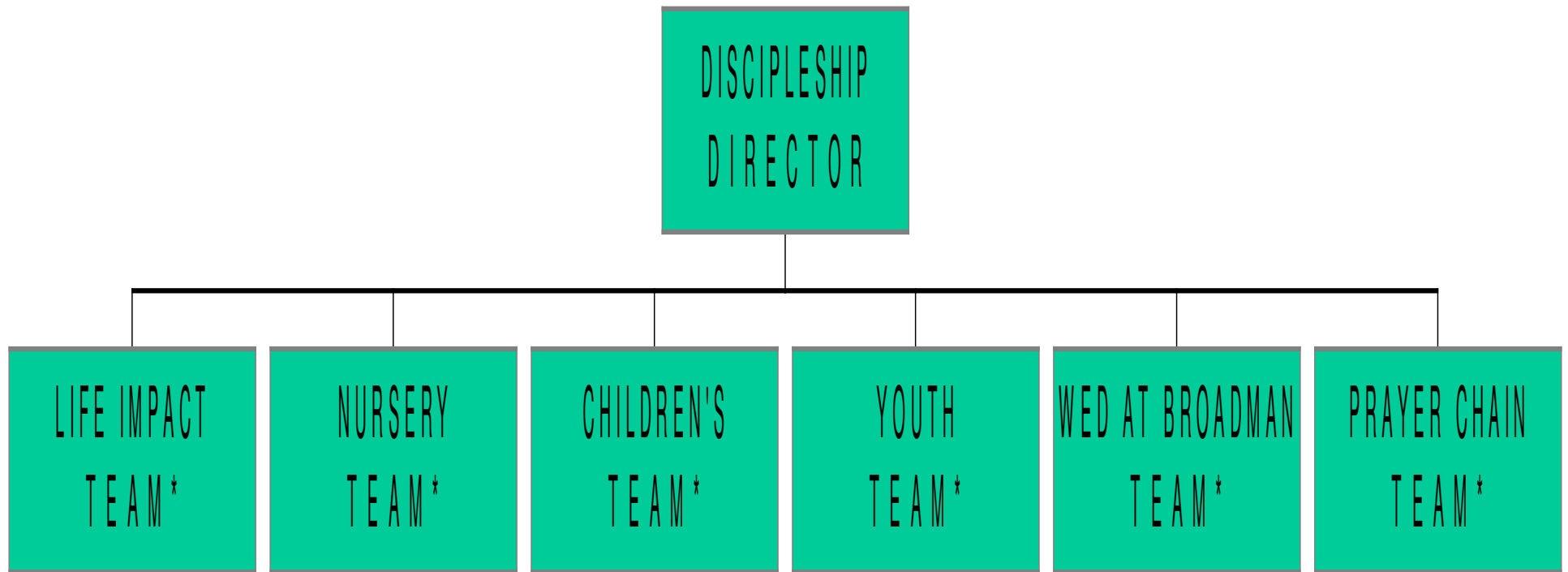
**\* See MINISTRY TEAMS at**  
<http://broadmanchurch.org/ministries/administration>

## OUTREACH MINISTRIES



**\* See MINISTRY TEAMS at**  
<http://broadmanchurch.org/ministries/administration>

DISCIPLESHIP MINISTRIES, Chart 1 of 2



**\* See MINISTRY TEAMS at**  
<http://broadmanchurch.org/ministries/administration>

DISCIPLESHIP MINISTRIES, Chart 2 of 2

